

# K 820 Power Unit

- The K 820 is a **compact** power unit, ideal for handling tough jobs on smaller sites like schools and estates.
- From artificial surfaces, to block paving - the attachments make it a **versatile**, year round maintenance tool.
- Low vibration and low noise make the machine **comfortable** to use for longer periods.
- Hydraulic drive makes the K 820 extremely **durable** and easy to operate.



**Kersten**  
SITE MAINTENANCE EQUIPMENT



# ATTACHMENTS

## K 820 PRO POWER UNIT

### K 820 Power Unit

The K 820 Power unit features a Honda GCV 160 engine, 160cc - 9lt.min hydraulic pump - 0-4km/ h variable forward speed - 300kg axle load - 3 position adjustable handlebar - Hydraulic implement drive - W 60cm - L 105cm - H 115cm - Weight 90kg - Low vibration 2.86m/ s2 - Low noise <84dB (Operators Ear) - Recoil Start - Max angle 15 degrees.

This power unit is perfect for simplifying maintenance tasks such as Sweeping, snow ploughing, gritting, weed clearance, and artificial surface maintenance. Attachments can be changed in a matter of seconds by releasing the quick couplings and connection pin. Operating the machine is as simple as two levers, the left hand controls the forward speed, while the right hand operates the connected attachment.



## SWEEPER

### EFKM 09032H-K-35 Sweeper

82cm Sweeping attachment for Debris and detritus removal on hard surfaces - height adjustment on castor wheels and spindles - 35 mm quick connection system -spiral pattern 5 row brush - angling left and right - side driven by hydraulic motor.

The 5 row spiral sweeper has been thoughtfully designed for heavy duty sweeping of debris and soils with less effort. It is fully adjustable in height and angle, for coping with different surfaces such as artificial grass and block paving.

### 090 010 032 Spare Brush

### GUSPL 090 Brush Guard

The brush guard keeps debris close to the brush and prevents dust or spray being blown back at the operator.

### SSB 090 K Collector Box

The Poly Ethylene collector box is robust and durable. The carry handles make it easy to empty and the castors allow it to follow the contours with the brush, giving a more consistent finish.

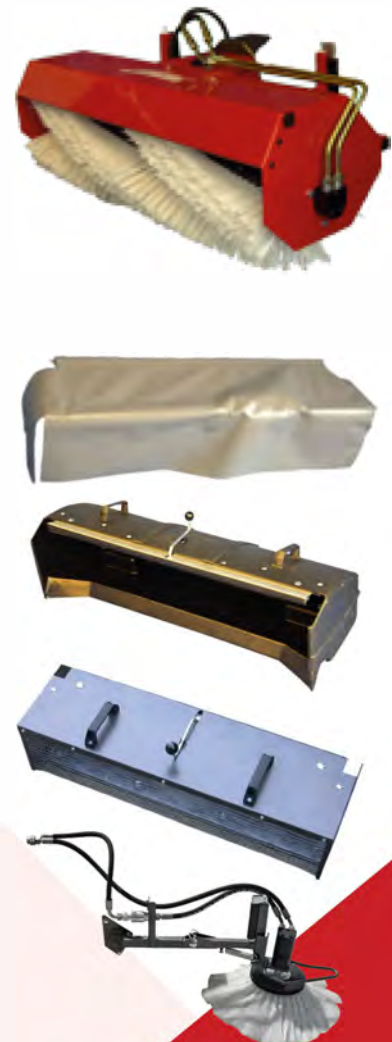
### SSB 090-KR Filtration Box

The light weight steel sports collector allows the brush to collect detritus and litter on artificial surfaces, while allowing the sand or rubber infill to fall back into the surface, making artificial pitch maintenance simple.

### ASH 403237 Gully Brush

The Gully brush sweeps debris away from edges into the path of the main brush for collection. This allows the sweeper to achieve a crisp finish along kerb edges and walls for real kerb appeal.

### 105 425 400 Spare Brush





# ATTACHMENTS

## WEEDBRUSH

### WKB-H-K35-820 Weedbrush

40cm Weedbrush attachment for moss and weed removal on hard surfaces - 8 replaceable versa brush sections - height adjustment on castor wheel and spindle - 35 mm quick connection system - 12kg weight to apply pressure - angling left and right - 5 forward/aft settings.

The Kersten weedbrush is ideal for removing moss and also much hardier weeds on all sorts of hard surfaces, including block paving, tarmac and concrete. The precise adjustment allows it to get between gaps and crevasses in the surface..

### 700 000 135 Spare brushes

8 spare brushes are required for a set.



## FOLDING PRESENTATION BRUSH

### KRB 250 KU 35 Folding Brush

250cm Presentation Brush for lifting the nap on artificial surfaces - height adjustment on castor wheels and spindles - 35 mm quick connection system -folding brushes - container for weights - support stand.

The folding Presentation brush is designed for easy access into tennis courts and other sports surfaces that require frequent maintenance after heavy footfall. The brush redistributes the surface infill and stands up the pile to create an even playing surface and promote good drainage.

### 100 510 080 Spare brush

3 spare brushes are required for a set.

### SULK- SWH Sulkey Seat

Trailed seat towed behind the power unit



## RECIPROCATING KNIFE MOWER

### DOME 090 H-K35 Knife Mower

90cm Reciprocating knife mower for grass conservation - 35 mm quick connection system -hydraulic drive - balancing weights - 2 adjustable skids - ESM Blades. .

The Reciprocating blades are designed to cut the grass cleanly near the base of the plant. The grass then falls backwards over the blade and the stem of the plant is left intact. This makes the knife mower ideal in conservation areas or for cutting grass used for animal feed or bedding.



# ATTACHMENTS

## SNOW PLOUGH

### **SCHN-100ST-K35**      **Snow Plough**

100cm Snow Plough attachment for snow clearance on paths and car parks - replaceable Urethane edge - height adjustment on mushroom skids - 35 mm quick connection system - 12kg weight to apply pressure - angling left and right - 45cm blade height.

The Kersten snowplough is great for clearing access paths or parking bays, so that your business can continue as usual despite the snow. additional accessories such as the wheel weights and snow chains add traction, making the job much easier.

**800 105 106**      **Spare Blade**

**RGW 400X8**      **Wheel Weights**

**SCHNK 400X8**      **Snow Chains**



## BROADCAST SPREADER

### **SLDST 70K 35**      **Spreader**

70 litre broadcast spreader for winter maintenance and all season spreading - spread width adjustment 0.5m - 4.0m - 35 mm quick connection system - simple flow regulation - damp material auger - support stand.

The Broadcast spreader is built for handling tough salt and winter conditions, but it is also precise enough for all season application of sand on artificial pitches or block paving. The damp material auger is great for most common salt and sand types.

**100 510 080**      **Hopper Cover**

Keeps the material dry.



## THERMAL WEED REMOVER

### **TWB 75 K**      **HOAF thermHIT 75 M**

HOAF is a market leader in the field of ecological vegetation control in public places and in agriculture. Thanks to years of experience with burner technology and the wide range of products,

The Hoaf Infra Plus System uses infrared radiation in combination with hot air.

By exposing the unwanted vegetation to this process, the proteins in the weeds congeal and the moisture cells burst open at about 70°C. As a result the vegetation starts wilting and dies.





## WHEEL OPTIONS

**4.00 - 8 BL**

**Turf Profile Tyres**

**4.00 - 8 AS**

**Field Profile Tyres**

In Lieu of 4.00 - 8 BL Turf Tyres

**16 x 6.50 - 8 BL**

**Turf Profile Tyres**

In Lieu of 4.00 - 8 BL Turf Tyres

**16 x 6.50 - 8 AS**

**Field Profile Tyres**

In Lieu of 4.00 - 8 BL Turf Tyres



# GALLERY

## PRESENTATION BRUSH



## SWEEPER



## WEEDBRUSH



## SNOW PLOUGH



[info@kerstenuk.com](mailto:info@kerstenuk.com) - [www.kerstenuk.com](http://www.kerstenuk.com) - 0118 9869 253